



Enhance your projects with immersive high resolution projection displays on arbitrary surfaces with any content.

VIOSO Blackbox™ enhances any simulation and visualization project with a truly immersive visual experience.

Powered by up to four high speed full resolution DVI inputs and outputs any content is soft edge blended and warped across up to four projectors, boosting the impression of visual projects

like simulators, visualizations, hi-res movies and photographs as well as professional gaming and live feeds. Utilizing the powerful warping engine any surface can be used as a projection screen; common planar screens as well as round screens, half-domes and other extraordinary surfaces. VIOSO's new 3D capa-

bilities support active and passive stereo systems, too.

VIOSO Blackbox™ convinces with its extremely easy and versatile usability concept: Compound displays are created fully automated by utilizing a camera. Complex image alignment, content warping and soft edge computation are done within a few minutes and result in an

outstanding quality. This saves installation costs as well as efforts for maintenance significantly.

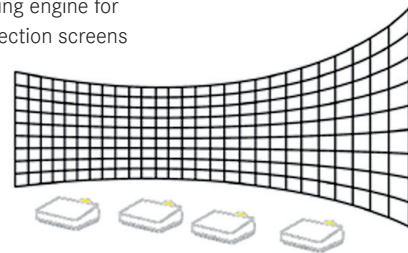
VIOSO Blackbox™ is already used by many companies around the world including leaders of automotive, military and aerospace industries.

Main Features:

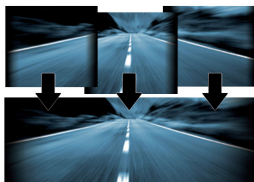
- 4 x High-Speed DVI-Inputs (up to WUXGA)
- 4 x High-Speed DVI-Outputs (up to WUXGA)



- Flexible warping engine for arbitrary projection screens



- Automatic camera supported setup within minutes
- Automatic image alignment and soft edge blending for best quality

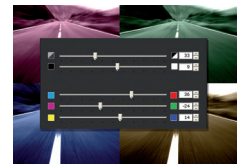


VIOSO recommends industrial cameras from IDS Imaging

- Projector stacking for maximum brightness



- Correction of color and brightness



Requirements:

- Windows 7® compatible live camera (not included)

For 2 Projectors:
VIOSO Blackbox Double

For 3 Projectors:
VIOSO Blackbox Triple

For 4 Projectors:
VIOSO Blackbox Quad